



vmi clearway™

platformlifts

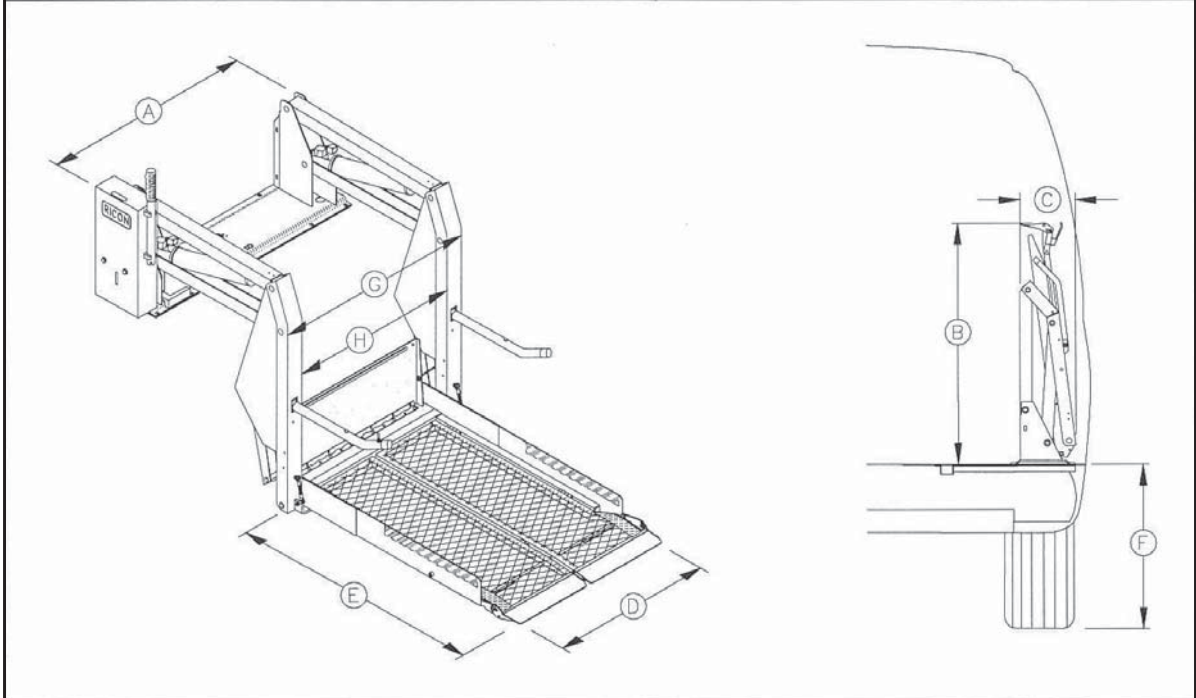
The innovative approach to lift technology; the exclusive split-platform folds vertically, allowing unobstructed access upon exit and entry whether or not the lift is deployed. The driver's line of sight is also unobstructed for optimum safety. Beyond intelligent design, there is also muscle. Dual-power cylinders ensure smooth, reliable operation, even for heavy wheelchairs and scooters.

advantages

- All-steel frame features convenient handrails for increased comfort and security
- Stable, non-skid platform with automatic inboard and outboard rollstops
- Pre-lubricated bearings at all major pivot points offer long term durability
- Built in manual backup system



Power.....	electro-hydraulic	Rated load capacity	600 lbs
Motor rating @ 12 volts DC	65.0 amp avg/cycle, 1250 psi	Manual backup (up)	hand pump
@ 24 volts DC.....	32.5 amp avg/cycle, 1250 psi	Manual backup (down).....	pressure release valve
Hydraulic cylinders	2 ea, 1.5", power-up/gravity-down	Lift weight	300 - 325 lbs



specifications (inches)

	A	B	C	D	E	F	G	H
MODEL	Stationary frame width	Height (folded)	Installation depth (folded)	Usable platform width	Usable platform length	Floor-to-ground travel	Traveling frame width	Clear entry width
S1132	41	40	19.5	26	38	27	33.5	27
S1133	45	40	21.5	30	38	27	37.5	31
S1230	45	50	21.5	30	48	31	37.5	31
S1231	45	44	21.5	30	42	31	37.5	31